



Addendum No. 2

The Transit Authority of the City of Omaha d/b/a Metro
**Omaha Metro-Creighton University
Multi-Modal Facility (Transit Stations)**

Project No. 15-20 Creighton 2, NE-04-044 / Specification No. 34-17

Date Issued: 7-7-2020

To: All Interested Parties

This Addendum forms a part of the Contract Documents dated. The Bidder shall acknowledge receipt of this Addendum on the Price Schedule form provided. Failure to acknowledge receipt may subject the Bidder to disqualification.

This Addendum consists of the following:

- 1) Clarifications
- 2) Revisions to the Specifications
- 3) Revisions to Plan Sheets (13 Sheets)

CLARIFICATIONS

1. Specifications for concrete scoring and jointing materials are per City of Omaha standard specifications and Specification 32 13 13.
2. Duo-Gard, or approved vendor, provides shop drawings and installation information only upon placing order. Shop drawings shall be provided to landscape architect for approval, per 32 33 00, prior to authorizing fabrication.
3. Existing fiber optic and irrigation at 20th Street locations to be relocated by Contractor outside paved area but within construction limits. Exact locations to be coordinated with landscape architect and University.
4. Sheets SP000, SP101 and SP102 of the 24th Street Project are provided for reference only, in order the clarify the types of flatwork outside the project limits.
5. Levelers are not anticipated to be needed for the shelters or benches. Contact manufacturers about availability.
6. There are no trash receptacles in the project.

CHANGES TO SPECIFICATIONS

1. Division 3 – Supplemental Conditions, Article 16.

Revise the Items 1 and 3 to read as follows:

Item 1 – Mobilization- Mobilization shall be measured as a lump sum and paid for at the contract unit price. Mobilization will include bond costs, insurance costs, sanitary facilities, and other incidentals for the complete construction of the project, including relocation of utilities including, but not limited to, fiber optic lines and irrigation lines, as needed at 24th Street shelter locations.

Item 3 – Bus Shelters (complete with concrete footings) - Bus shelters shall be measured as an each and paid for at the contract unit price. Bus Shelters shall include all labor, materials, and accessories necessary to install bus shelter and concrete footings complete in place. The materials shall include, but not limited to, bus shelter (including Solar lighting package), installation hardware, shims and epoxies. Price shall include costs for engineer certified shop drawings.

2. Section 32 33 00 – Site Furnishings

Revise the bus shelter description to read as follows:

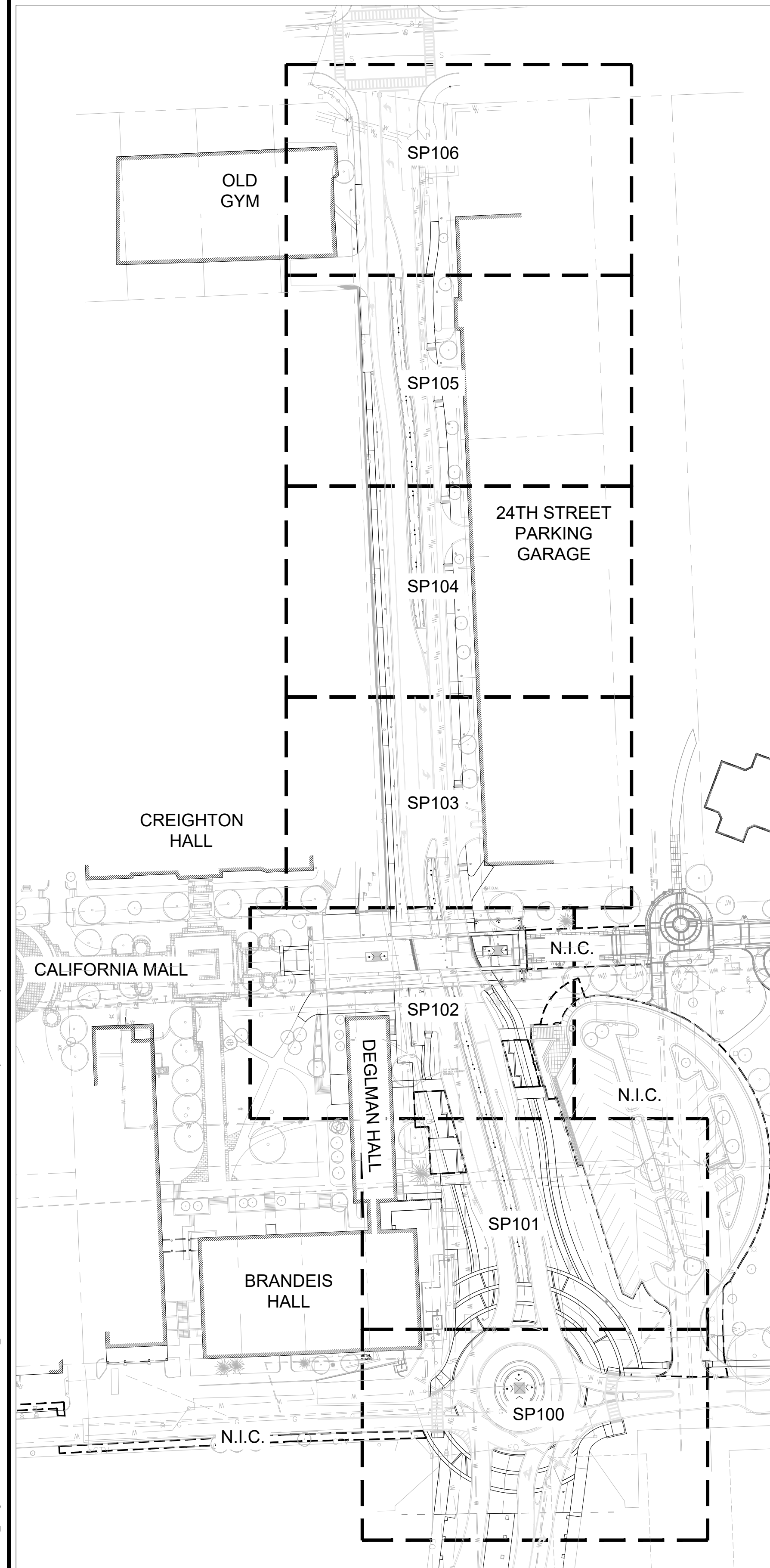
2. Bus Shelter:

- a. Duo-Gard Alton Series 16' Transit Shelter with single slope metal roof, or approved equal;
- b. Color: "Black" chosen from manufacturers standard colors
- c. Steel framing w/ Tnemec finish - Landscape architect to select color from manufacturers standard colors
- d. Metal roof - single sloped
- e. 3/8" clear tempered glass walls w/ ceramic frit
- f. All glass to have flat polished edges
- g. Stainless steel glass point supports
- h. Stainless Steel baseplate covers
- i. Concrete footings per Manufacturers recommendations
- j. LED solar lighting package

CHANGES TO PLAN SHEETS

1. Disregard note "sod by others" it should be deleted from plan.

File Location: N:\1 PROJECTS\2018\18311_Creighton Univ 24th St. Beautification\18311_WORKING\AUTOCAD\18311_SP100_LAYOUT_SHEETS Drawn by: CB / Checked by: DS



KEYNOTE LEGEND:

- (A) CONSTRUCT BRICK COLUMNS AND BRICK SCREEN WALL; RE: 08/SP203
- (B) LEGALLY REMOVE AND DISPOSE OF EXISTING GUARD POSTS AND CONSTRUCT NEW 6" GUARD POST; RE: 06/SP201
- (C) CONSTRUCT CONCRETE PAVER EDGE (VEHICULAR); RE: 08/SP200. SPACE JOINTS EVENLY AND EQUALLY AT APPROX. 2'-0" O.C.
- (D) CONSTRUCT CONCRETE PAVER EDGE (PEDESTRIAN); RE: 12/SP200. SPACE JOINTS EVENLY AND EQUALLY AT APPROX. 2'-0" O.C.
- (E) CONSTRUCT 36 INCH CONCRETE BAND (PEDESTRIAN) RE: 7/SP200
- (F) CONSTRUCT 36 INCH CONCRETE BAND (VEHICULAR) RE: 11/SP200
- (G) CONSTRUCT 6" CONCRETE PAVING; RE: 1/SP200
- (H) INSTALL BOLLARDS IN BRICK; RE: 04/SP204
- (I) INSTALL GRANITE CURB; RE: 14/SP200
- (J) INSTALL LIGHT FIXTURE AND FOOTING; RE: ELECTRICAL SHEETS
- (K) INSTALL ACCENT LIGHT FIXTURE AT GATEWAY MONUMENTS; RE: ELECTRICAL SHEETS
- (L) INSTALL TRENCH DRAIN IN BRICK PAVER FIELD; RE: 08/SP201
- (M) INSTALL BOLLARD IN CONCRETE; RE: 03/SP202
- (N) ORNAMENTAL METAL FENCE ON FENCE BASE; RE: 04/SP203
- (O) INSTALL INSET PAVER BAND, GRANITE CURB AND PLANTER FENCE AT MEDIAN; RE: 01/SP202
- (P) INSTALL BLACK HANDRAIL (CREIGHTON STANDARD); RE: 03 AND 04/SP206
- (Q) CONSTRUCT PRIMARY GATEWAY MONUMENT; RE: SP205 AND STRUCTURAL SHEETS
- (R) CONSTRUCT SECONDARY GATEWAY MONUMENT; RE: SP204 AND STRUCTURAL SHEETS
- (S) PRESERVE AND PROTECT EXISTING HISTORICAL WALL
- (T) CONSTRUCT FENCE PIERS WITH ORNAMENTAL METAL FENCE ON FENCE BASE; RE: 01/SP203
- (U) INSTALL DETECTABLE WARNING PANELS; RE: CIVIL
- (V) INSTALL PAVERS FOR BIKE LANE THROUGH CALIFORNIA MALL CROSSING; RE: 7/SP201
- (W) INSTALL STRIPED CROSSWALK; RE: CIVIL PLANS
- (X) INSTALL TRAFFIC SIGNAL POLES; RE: CIVIL PLANS
- (Y) LANDSCAPE BED SUBDRAIN. RE: CIVIL PLANS FOR DEPTH AND LOCATION
- (Z) LANDSCAPE BED; RE: LANDSCAPE SHEETS
- (AA) CONSTRUCT FENCE PIER TYPE 2; RE: 02/SP203
- (BB) INSTALL PEDESTRIAN LIGHT FIXTURE WITH BANNER; RE: 01/SP201
- (CC) INSTALL PEDESTRIAN LIGHT FIXTURE WITH FLOWER BASKET; RE: 01/IR001

ITEMS NOT IN CONTRACT:

- 1 CONCRETE SIDEWALK
- 2 TRANSIT STATION IMPROVEMENTS - BY OTHERS. CONTRACTOR TO FIELD VERIFY
- 3 LIED PARKING LOT IMPROVEMENTS - BY OTHERS. CONTRACTOR TO FIELD VERIFY
- 4 EAST OF 24TH STREET CONTRACT BOUNDARIES CALIFORNIA MALL IMPROVEMENTS - BY OTHERS. COORDINATE NEW ALIGNMENT AND FIELD VERIFY WITH LANDSCAPE ARCHITECT AND OWNER FOR APPROVAL PRIOR TO CONSTRUCTION
- 5 B-CYCLE LOCATION - BY OTHERS. CONTRACTOR TO FIELD VERIFY PRIOR TO CONSTRUCTION

PAVING LAYOUT NOTES:

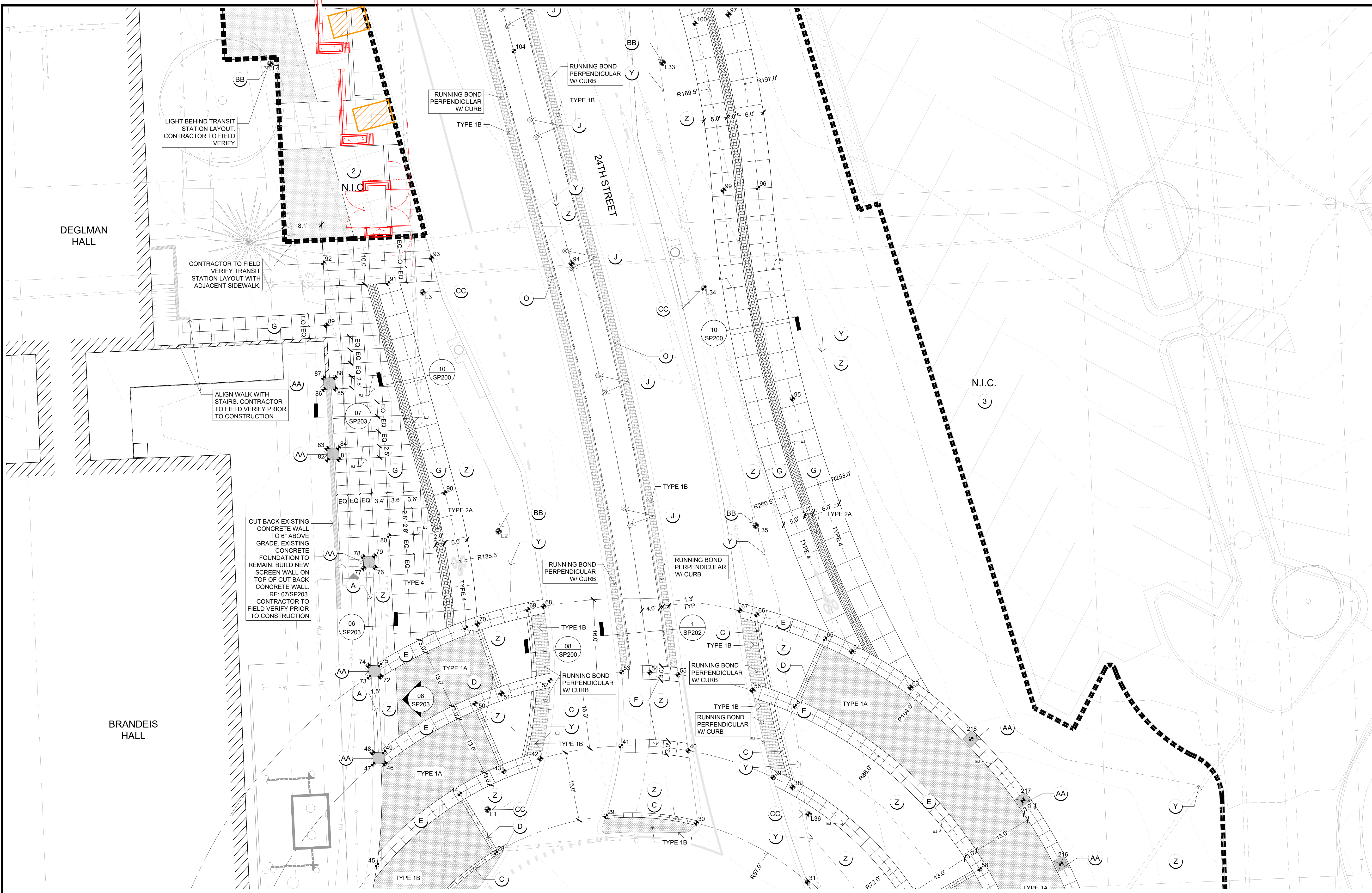
1. ALL CURBS RAMPS TO BE BUILT AS PER FEDERAL ACCESSIBILITY STANDARDS.
2. PAVING DIMENSIONS ARE TO BACK OF CURB UNLESS OTHERWISE NOTED.
3. BOUNDARY AND TOPOGRAPHIC INFORMATION TAKEN FROM SURVEY ARE PREPARED BY EHRHART GRIFFIN & ASSOCIATES, 3552 FARNAM ST, OMAHA, NE 68131.
4. ALL WORK SHALL BE IN ACCORDANCE WITH OSHA CODES AND STANDARDS. NOTHING INDICATED ON THESE DRAWINGS SHALL RELIEVE THE CONTRACTOR FROM COMPLYING WITH ANY APPROPRIATE SAFETY REGULATIONS.
5. VERIFY COORDINATES PRIOR TO CONSTRUCTION.
6. CONTRACTOR TO SUPPLY AND INSTALL ALL NECESSARY SLEEVES UNDER PAVING AND WALKS.
7. PROPOSED SIGNAGE TO MEET CITY CODES FOR GROUND SIGNS.
8. CONTRACTOR SHALL DETERMINE THE EXACT LOCATION OF ALL EXISTING UTILITIES BEFORE COMMENCING WORK, AND AGREES TO BE FULLY RESPONSIBLE FOR ANY AND ALL DAMAGES WHICH MIGHT BE OCCASIONED BY THE CONTRACTOR'S FAILURE TO EXACTLY LOCATE AND PRESERVE ANY AND ALL UNDERGROUND UTILITIES.
9. PAVEMENT TYPES:
 - 9.1. TYPE 1A: RED BLEND, 2 3/4" THICK, ENDICOTT PAVERS, BEVELED EDGE, 4" SUBBASE. RE: 5/SP200
 - 9.2. TYPE 1B: RED BLEND, 2 3/4" THICK, ENDICOTT PAVERS, BEVELED EDGE, 10" SUBBASE. RE: 6/SP200.
 - 9.3. TYPE 2A: MANGANESE, 2 3/4" THICK, ENDICOTT PAVER, BEVELED EDGE, 4" SUBBASE; RE: 10/SP200 AND 9/SP201.
 - 9.4. TYPE 2B: MANGANESE, 2 3/4" THICK, ENDICOTT PAVER, BEVELED EDGE, 10" SUBBASE. RE: 6/SP200.
 - 9.5. TYPE 3: CHEROKEE BLEND, 2 1/4" THICK, CLOUD CERAMICS; SQUARE EDGE, 4" SUBBASE. 9/SP200.
 - 9.6. TYPE 4: PCC PAVING. RE: SECTIONS AND DETAIL SHEETS FOR THICKNESS.
10. ALL BRICK PAVING PATTERN TO BE HERRINGBONE UNLESS OTHERWISE NOTED.
11. ANY PENETRATION OF UTILITIES TO THE BRICK PAVING TO BE SEPARATED WITH ONE COURSE OF PAVERS. RE: 13/SP200.
12. PAVEMENT JOINTING NOTES:
 - 12.1. JOINTS BETWEEN CRITICAL POINTS ARE TO BE EQUALLY SPACED AS SHOWN
 - 12.2. WHERE NEW PAVEMENTS ARE CALLED FOR, PROVIDE AN EXPANSION JOINTS AROUND ALL EXISTING UTILITIES, MANHOLES, POLES, LIGHTS, ETC.
 - 12.3. PLACE EXPANSION JOINTS AT ALL VERTICAL ELEMENTS (BUILDING, COLUMNS, WALLS, BACK OF CURBS, ETC.) AND AT CHANGES IN GRADE, DIRECTION, AND APPROXIMATELY EVERY 50'.
 - 12.4. CONTRACTOR TO PROVIDE LAYOUT IN FIELD FOR LANDSCAPE ARCHITECT APPROVAL..
13. DETAILS ASSOCIATED WITH THE 24TH STREET RIGHT OF WAY INCLUDE THE FOLLOWING:
 - SP200: DETAILS 5, 6, 7, 11 AND 13.
 - SP201: DETAIL 7
 - SP202: DETAIL 3
 - SP203: NONE
 - SP204: NONE
 - SP205: DETAILS 1 AND 2
 - SP206: NONE
14. LIGHT POLE ATTACHMENTS TO BE CLEAR FROM ROADWAY. CONTRACTOR TO VERIFY PRIOR TO CONSTRUCTION

CONTROL POINT	EASTING	NORTHING
1	2755087.596	547294.82
2	2755076.769	547289.0791
3	2755059.994	547283.5697
4	2755053.756	547282.4292
5	2755038.754	547281.5389
6	2755016.348	547285.0497
7	2755000.229	547291.5547
8	2754996.262	547293.7763
9	2754982.483	547303.8489
10	2754969.903	547333.198
11	2754978.884	547333.2027
12	2754993.176	547315.7511
13	2754995.431	547313.8252
14	2754999.716	547310.5623
15	2755017.389	547301.5112
16	2755040.398	547297.5117
17	2755056.285	547299.1368
18	2755064.897	547301.569
19	2755084.182	547311.8496
20	2755090.378	547317.0514
21	2755071.642	547321.4072
22	2755066.046	547318.2765
23	2755045.361	547312.6711
24	2755018.789	547311.0398
25	2754988.953	547346.4051
26	2754986.219	547353.97
27	2754984.417	547375.8782
28	2755011.631	547418.3243
29	2755035.454	547426.2322
30	2755055.101	547424.7522
31	2755079.167	547411.9195
32	2755093.95	547390.8119
33	2755098.06	547369.4729
34	2755095.91	547354.0008
35	2755041.06	547369.5087
36	2755111.949	547382.1114
37	2755102.68	547406.7508
38	2755075.935	547432.5134
39	2755071.662	547434.6818
40	2755053.313	547440.4585
41	2755038.701	547441.47
42	2755021.25	547438.7297
43	2755013.36	547435.9667
44	2755003.774	547431.0941
45	2754985.81	547415.6761
46	2754987.494	547437.6565
47	2754984.997	547437.5282
48	2754984.869	547440.025
49	2754987.366	547440.1532
50	2755007.101	547450.6923
51	2755012.832	547452.8583
52	2755023.361	547455.7104
53	2755038.896	547457.482
54	2755044.977	547457.4215
55	2755051.118	547456.932
56	2755067.231	547453.3054
57	2755076.442	547450.0947
58	2755116.539	547414.7522
59	2755128.464	547379.7378
60	2755128.967	547365.4632
61	2755128.444	547359.1073
62	2755143.727	547386.1117
63	2755101.518	547454.1308
64	2755088.756	547461.9267
65	2755082.955	547464.7095
66	2755068.147	547469.9285
67	2755064.477	547470.8382
68	2755021.952	547471.7382
69	2755018.517	547471.036
70	2755007.614	547467.9812
71	2755005.098	547467.0931
72	2754986.576	547456.5156
73	2754984.08	547456.3874
74	2754983.951	547458.8841
75	2754986.448	547459.0124
76	2754985.423	547480.1356
77	2754982.926	547480.01
78	2754982.798	547482.5052
79	2754985.295	547482.6323

CONTROL POINT	EASTING	NORTHING
80	2754988.445	547487.0569
81	2754977.605	547503.6125
82	2754975.108	547503.4842
83	2754974.98	547505.9809
84	2754977.477	547506.1092
85	2754976.812	547518.9054
86	2754974.315	547518.7771
87	2754974.187	547521.2738
88	2754976.683	547521.4021
89	2754974.831	547532.6589
90	2755000.519	547496.4099
91	2754988.216	547541.8023
92	2754974.173	547546.1774
93	2754997.624	547547.2294
94	2755027.986	547546.065
95	2755075.901	547516.7629
96	2755068.405	547562.4884
97	2755062.038	547600.0964
98	2755057.997	547615.0033
99	2755060.923	547611.9583
100	2755054.799	547598.1345
101	2755050.32	547614.6589
102	2755062.385	547620.2065
103	2755038.232	547619.1216
104	2755015.491	547592.1667
105	2754976.181	547626.3478
106	2754951.236	547625.2287
107	2754951.124	547627.4941
108	2754964.119	547630.8117
109	2754962.475	547643.8091
110	2754963.875	547671.9
111	2754950.246	547645.2338
112	2754937.585	547644.6364
113	2754935.599	547688.9259
114	2754947.899	547692.6592
115	2754854.808	547688.265
116	2754853.176	547684.6866
117	2754859.849	547679.5603
118	2754869.106	547685.6996
119	2755024.83	547668.572
120	2755050.735	547669.7341
121	2755041.915	547674.3421
122	2755035.427	547689.7332
123	2755019.99	547713.2298
124	2755034.238	547673.9977
125	2755029.158	547685.6151
126	2755011.302	547712.7952
127	2755004.726	547722.8035
128	2754997.183	547740.7157
129	2754992.403	547764.9639
130	2754983.917	547708.6664
131	2754979.866	547724.5505
132	2754973.37	547755.0078
133	2754971.772	547763.9642
134	2754965.063	547817.9323
135	2754999.412	547765.3054
136	2755005.342	547764.3194
137	2755002.845	547764.2384
138	2755002.724	547766.7155
139	2755005.221	547766.8365
140	2755024.339	547765.2599
141	2755021.842	547765.1389
142	2755021.721	547767.636
143	2755024.218	547767.757
144	2755043.772	547766.2015
145	2755041.275	547766.0805
146	2755041.154	547768.5776
147	2755043.651	547768.6986
148	2755044.956	547757.259
149	2755040.961	547757.0649
150	2755040.767	547761.0607
151	2755044.763	547761.2543
152	2755043.027	547755.6682
153	2755044.46	547726.1786
154	2755046.724	547720.7819
155	2754925.0472	548079.2454
156	2755042.535	547724.5836
157	2755046.53	547724.7772
158	2755046.343	547713.1456

CONTROL POINT	EASTING	NORTHING
159	2755043.846	547713.0246
160	2755043.725	547715.5217
161	2755046.222	547715.6427
162	2755026.757	547712.3149
163	2755024.26	547712.1939
164	2755024.139	547714.6909
165	2755026.636	547714.8119
166	2755022.789	547739.9051
167	2754962.277	547710.3427
168	2754879.001	547706.1814
169	2754878.408	547718.1328
170	2754867.406	547704.3433
171	2754864.909	547704.2223
172	2754864.788	547706.7193
173	2754867.285	547706.8403
174	2754867.776	547712.1112
175	2754863.781	547711.9176
176	2754863.587	547715.9129
177	2754867.582	547716.1065
178	2754865.524	547717.2718
179	2754864.084	547746.9976
180	2754866.008	547748.5926
181	2754862.013	547748.399
182	2754861.819	547752.3943
183	2754865.815	547752.5879
184	2754864.83	547757.5309
185	2754862.333	547757.4099
186	2754862.212	547759.907
187	2754864.709	547760.028
188	2754876.933	547747.6157
189	2754904.724	547748.9623
190	2754920.12	547734.9303
191	2754934.819	547762.1737
192	2754951.152	547762.9651
193	2754933.348	547794.9952
194	2754930.753	547852.8989
195	2754923.105	548007.3495
196	2754916.147	548152.9588
197	2754912.477	548229.7736
198	2754909.189	548298.568
199	2754907.312	548333.4943
200	2754905.047	548388.7627
201	2754909.001	548373.927
202	2754996.233	547785.6482
203	2755014.831	547813.3622
204	2754992.112	547825.0307
205	2754990.055	547866.931
206	2754980.543	548078.8925
207	2754979.234	548108.0459
208	2754976.992	548158.0124
209	2754971.189	548215.7555
210	2754967.928	548238.7732
211	2754965.153	548272.7488
212	2754964.472	548287.7334
213	2754966.881	548322.6583
214	2754969.412	548349.4095

File Location: N:\1 PROJECTS\2018\18311_1 WORKING\AUTOCAD\18311 SP100 LAYOUT SHEETS / Drawn by: GB / Checked by: DS



COPYRIGHT © 2019 BY CONFLUENCE
ALL RIGHTS RESERVED. THIS DRAWING IS
PROVIDED AS AN INSTRUMENT OF SERVICE BY
CONFLUENCE, AND IS INTENDED FOR USE ON
THIS PROJECT ONLY. ANY REPRODUCTION, USE
OR DISCLOSURE OF INFORMATION CONTAINED
HEREIN WITHOUT PRIOR WRITTEN CONSENT OF
CONFLUENCE IS STRICTLY PROHIBITED.

ISSUED FOR

100% BID
DOCUMENTS

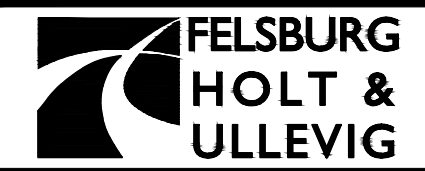
JUNE 10, 2019



01 PAVING LAYOUT PLAN ENLARGEMENT

SCALE: 1"=10'
0' 5' 10' 20'

PAVING LAYOUT PLAN ENLARGEMENT

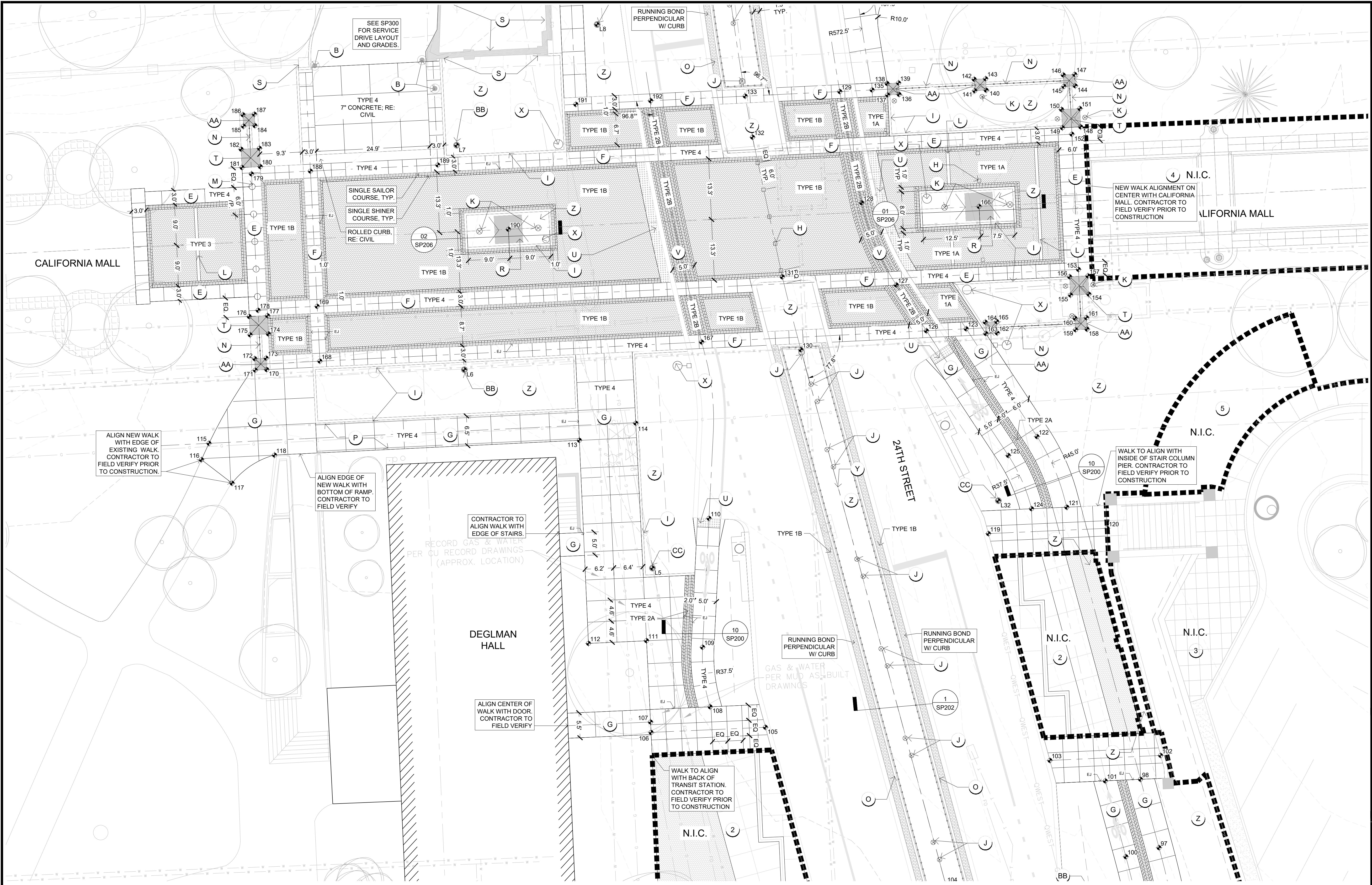


CITY OF OMAHA
PUBLIC WORKS DEPARTMENT

OPW 53457

SHEET
SP101

File Location: N:\1 PROJECTS\2018\18311_L_WORKING\AUTOCAD\18311_LAYOUT SHEETS / Drawn by: CB / Checked by: DS



01 PAVING LAYOUT PLAN ENLARGEMENT

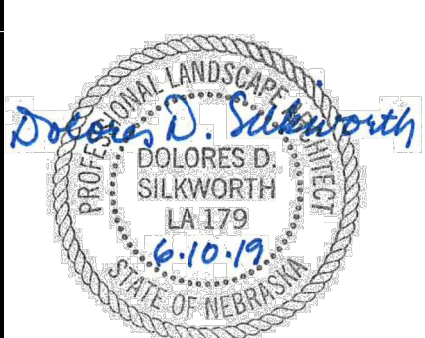
SCALE: 1"=10'
0' 5' 10' 20'

COPYRIGHT © 2019 BY CONFLUENCE
ALL RIGHTS RESERVED. THIS DRAWING IS
PROVIDED AS AN INSTRUMENT OF SERVICE BY
CONFLUENCE, AND IS INTENDED FOR USE ON
THIS PROJECT ONLY. ANY REPRODUCTION, USE
OR DISCLOSURE OF INFORMATION CONTAINED
HEREIN WITHOUT PRIOR WRITTEN CONSENT OF
CONFLUENCE IS STRICTLY PROHIBITED.

ISSUED FOR

100% BID
DOCUMENTS

JUNE 10, 2019



PAVING LAYOUT PLAN ENLARGEMENT



CITY OF OMAHA
PUBLIC WORKS DEPARTMENT

OPW 53457

SHEET
SP102